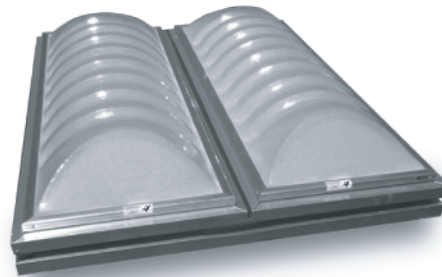


Double Glazed Signature Series Dome

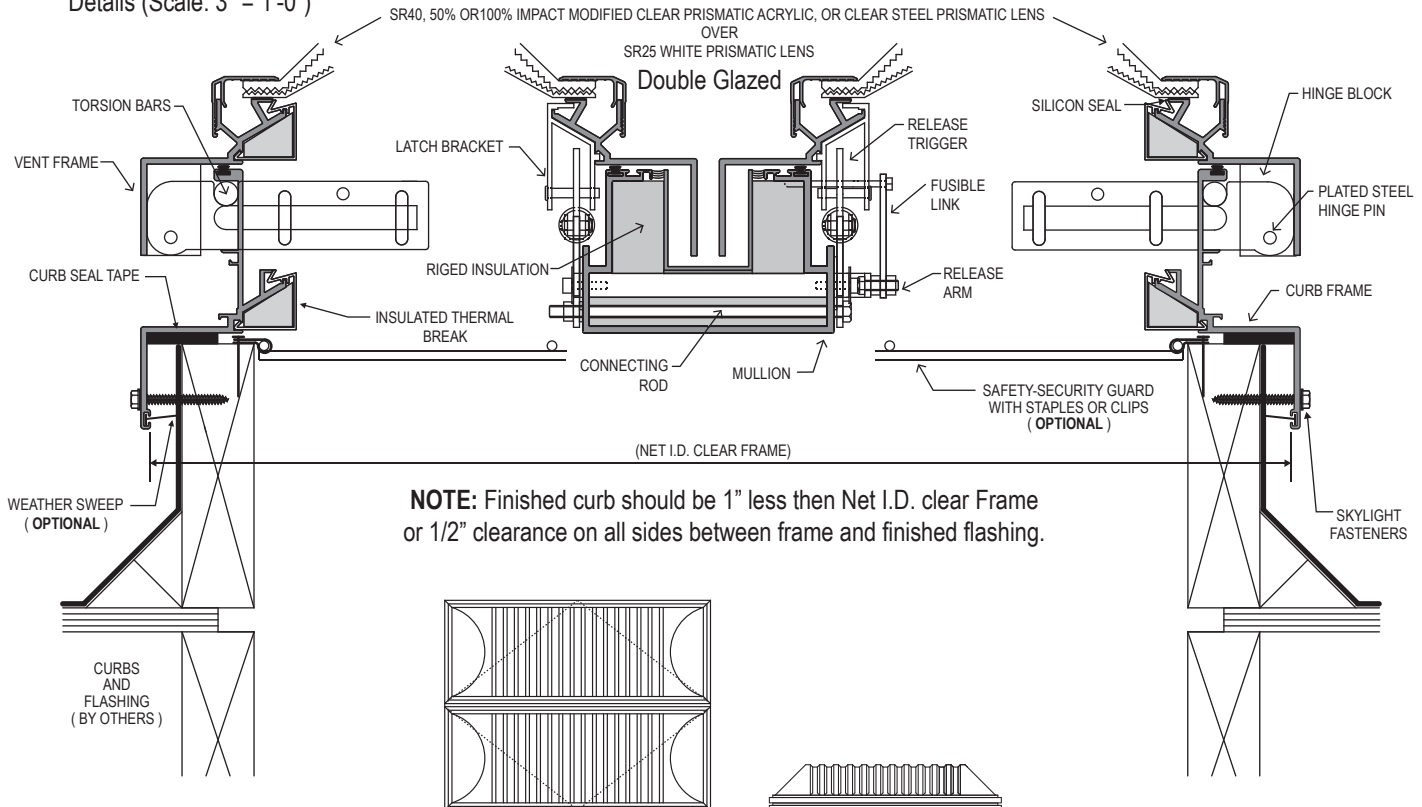
Factory Mutual Approved
Smoke Vent Industrial Skylight with
Insulated Thermal break and
(Optional) Safety Security Guard



Frame Model 870FM
Section 08620

Available Frame Finish
Natural Mill (Aluminum)

Details (Scale: 3" = 1'-0")



Standard Sizes

Call-Out Size	Net I.D. Clear Frame
4080	54 1/16" x 99 3/8"
5060	63 3/8" x 75 3/8"
5080	63 3/8" x 99 3/8"

Solar Heat Gain Coefficient = .49, U Value = .82, Visible Light Transmission = .65 (Acrylic Glazing Only)

Specifications

- Smoke Vents shall be Sunoptics model 870BFM Factory Mutual Rated (curb mounted) as manufactured by Sunoptics Skylights, 6201 27th Street, Sacramento Ca. 95822 916/395-4700
- Smoke Vents shall be glazed ready for installation.
- Smoke Vent frames shall be fabricated from 6063 T5 aluminum, finish to be natural mill. Frames shall have integral condensation and weepage gutters which drain interior moisture to the outside. Corners shall be mitered and welded. The acrylic glazing shall be separated from the skylight frame with a Silicon Seal.
- Smoke Vents shall operate by a fusible link with a minimum temperature rating of 386 degrees. The fusible link mechanism with Gas Shocks shall include an exterior manual release cable for testing. Smoke Vents shall open to a minimum angle of 105 degrees.
- Skylights shall be Double glazed using SR40 50% or 100%, Impact Modified Clear Prismatic or Clear Steel lens over SR25 White Prismatic lens, CC2 or CC1 Rated, glazed in a Signature Series Dome configuration.
- (Optional)** Safety Security Screen fabricated from a 4" X 4" wire mesh galvanized cold rolled steel. The safety screen shall be tested to withstand the impact of a 240 pound weight, one foot in diameter, dropped from a height of 3 feet and support a concentrated load of 600 pounds after the impact. Install using Staples or Clips provided at 12" O.C. between cross members.